

**FLUSH / SURFACE MOUNT 2.3" TIME and electronic 1" DATE / TEXT with Smaller Seconds, Upper or Lower**

**RED, GREEN, YELLOW, BLUE**

STRAIGHT PLASTIC Enclosure  
model: HYPTX-6U-2.3-732B

STRAIGHT METAL Enclosure  
model: HYTX-6U-2.3-732B

SLANTED METAL Enclosure  
model: HYTX-6U-2.3-733B



Dark Blue, Black or White enclosures

Multifunction Remote Control Included



Metal Black or White enclosures

**FEATURES and OPTIONS:**

- \* **Infra Red hand held REMOTE CONTROL for all functions**
- \* Optional: **Direct Replacement for existing MASTER-SLAVE SYSTEM CLOCKS** (replaces round, mechanical or electronic)
- \* 12 or 24 Hour and Military Display Format (user selectable)
- \* Optional: Multiple Master-Slave correction modes:
  - Power Line Carrier sync (Simplex)
  - 2 Wire, RS485 Twisted Pair Sync/Communication BCD digital, ASCII Time Code
  - RS232 ( PC port ) or RS485
  - 2 and 3 Wire, 24V Minute Impulse Sync
- \* Optional: Multi-Zone synchronized system
- \* Optional: Temperature Monitoring and Control:
  - Multi-Event Programmable Thermostat
  - Heating - Cooling Auto Change-Over
  - Inside and Outside Thermometer function
  - Min/Max Temperature Memory
  - Temperature Alarm and Relay outputs
- \* Stand - Alone operation for Home or Office
- \* Backup:
  - Selfrecharging backup - NO BATTERY NEEDED
  - 10 Year Lithium battery option

- \* Atomic Clock receiver - optional
- \* Optional: PC Sync Master
- \* Day/Date/Month/Year Alternating display selection
- \* Fully Adjustable Brightness
  - Manual via remote control
  - Auto-dimming - optional
- \* Julian Day option
- \* Auto Leap-Year correction
- \* Day Light Savings correction
- \* Timers:
  - Optional: Multi-Event Programmable Timer
  - Wake-Up Alarm Timer with soft beeper control
  - Stop-Watch function up to 1/100 sec resolution
  - Optional: External Start/Stop/Reset switch inputs
  - Up/Down Presettable Timer and Counter with Alarm (up to 99hrs:59min:59sec or 999999 counts)
- \* On-Board Alarms:
  - Alarm Buzzer, internal or optional external Horns
  - Optional: Alarm internal Relays ( Form C, 10Amp/240V )
- \* NON-GLARE lens
- \* NON-MULTIPLEXING - Camera friendly

**6 DIGIT TIME DISPLAY modes:**

- MODE 1: \*HH:MM SS ( 12 hour format with am/pm dot )
- MODE 2: HH:MM SS ( 24 hour format)
- MODE 3: HH:MM PM ( 12 hour format with am/pm text )
- MODE 4: HH:MM SS ( 24 hour Military format )
- MODE 5: HH:MM SS ( UP/DOWN Timer modes )
- MODE 6: MM:SS hh ( UP/DOWN Timer modes with 1/100 sec )
- MODE 7: d 267 07 ( JULIAN DAY with Year )

NOTE: Display with **UPPER** or **LOWER** seconds available

**DATE/TEXT DISPLAY modes:**

- MODE 1: FRI-OCT-12
- MODE 2: OCT-12-FRI
- MODE 3: 12-OCT-FRI
- MODE 4: FRI-12-OCT
- MODE 5: 12-OCT-2007
- MODE 6: OCT-12-2007
- MODE 7: 2007-12-OCT
- MODE 8: HH-MM-SS ( timer or counter )
- MODE 9: TIMER MM-SS ( timer )
- MODE 10: DDD-HH-MM.SS ( timer or counter )
- MODE 11: IN 25.3 C (or: 77.5 F)
- MODE 12: OUT 16.4 C (or: 61.5 F)
- MODE 13: TEMP. 25.3 C (or: 77.5 F)
- MODE 14: DAY 245 ( Julian day of the year )
- MODE 15: HH-MM-SS AM/PM ( Real Time Clock )
- MODE 16: TIME ZONE / TEXT DISPLAY

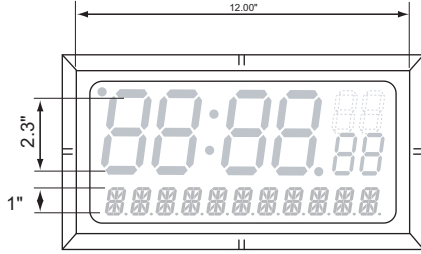
**OPTIONS:**

1. INTERNAL POWER SUPPLY FOR 115V or 220V , 50/60Hz
2. 12V and 24V DC or AC SUPPLY OPTION
3. SYSTEM MASTER SYNC WITH RS-232/485 COMPUTER INTERFACE / TWISTER PAIR
4. SYSTEM MASTER SYNC WITH SERIAL COMMUNICATION OVER POWER LINE
5. SYSTEM MASTER SYNC OVER POWER LINE CARRIER (HIGH AND LOW VOLTAGE)
6. SYSTEM MASTER SYNC 2 AND 3 WIRE, 24 VOLT MINUTE IMPULSE
7. SYSTEM MASTER SYNC ASCII TIME CODE FORMAT 0, 1, 2, 3, 4 ON RS-232/485

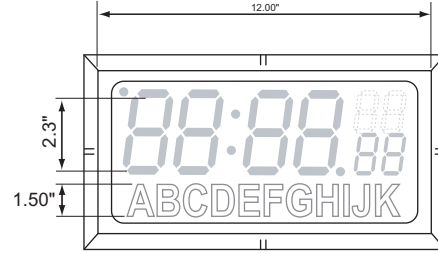


standard colors: white, black and stainless steel

Models series HYTX-HY-6(U)L-2.3 and HYVTX-HY-6(U)L-2.3

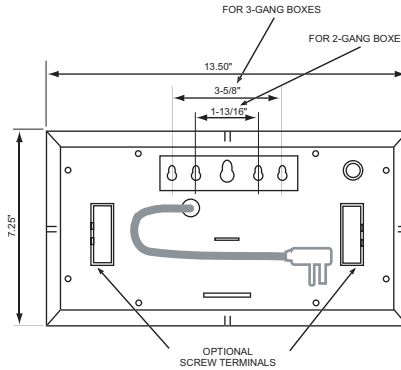
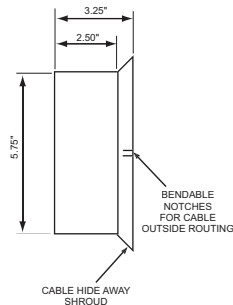


Lower or Upper seconds optional with Electronic Text / Date display



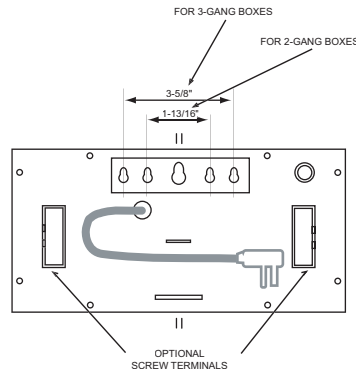
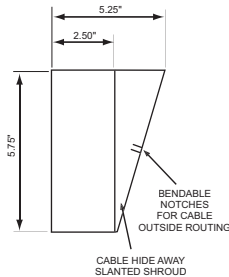
Lower or Upper seconds optional with Vinyl stick-on Text

STRAIGHT MODEL  
( option 732 )



Short cord with flat plug shown  
Optional:  
Long cord or Screw terminal for power connection

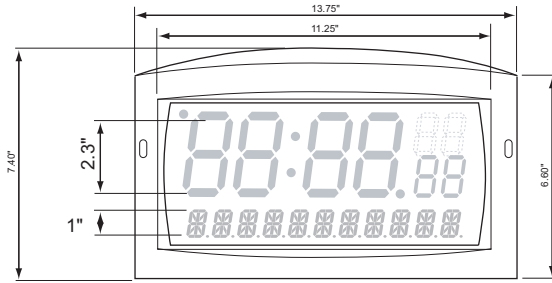
SLANTED MODEL  
( option 733 )



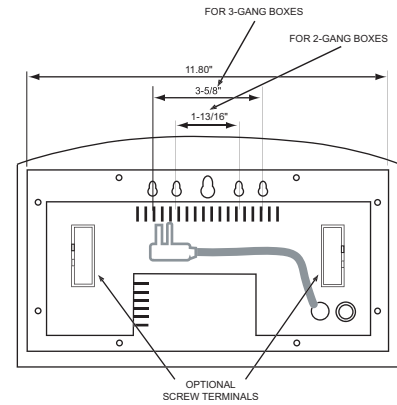
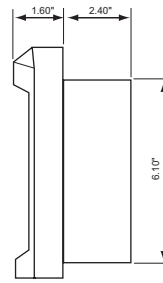
Short cord with flat plug shown  
Optional:  
Long cord or Screw terminal for power connection

standard colors: white, black and dark blue

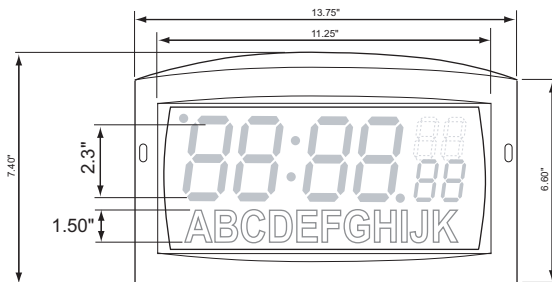
Models series HYPTX-HY-6(U)L-2.3 and HYPVTX-HY-6(U)L-2.3



Lower or Upper seconds optional with Electronic Text / Date display



Short cord with flat plug shown  
Optional:  
Long cord or Screw terminal for power connection



Lower or Upper seconds optional with Vinyl stick-on Text