

Waterproof Stainless Steel 6 Digit Time & Date / Text LED Clock

ALL CLOCKS INCLUDE REMOTE CONTROL

model series: HYTX-6(U)L-2.3R(G,Y,B).....732S4WP

FLUSH / SURFACE MOUNT

2.3" TIME electronic 1" DATE / TEXT
with Smaller Seconds, Upper or Lower

RED, GREEN,
YELLOW, BLUE

FEATURES and OPTIONS:

- * **Infra Red hand held REMOTE CONTROL for all functions**
- * Optional: **Direct Replacement for existing MASTER-SLAVE SYSTEM CLOCKS**
(replaces round, mechanical or electronic)
- * 12 or 24 Hour and Military Display Format (user selectable)
- * Optional: Multiple Master-Slave correction modes:
Power Line Carrier sync (Simplex)
2 Wire, RS485 Twisted Pair Sync/Communication
BCD digital, ASCII Time Code
RS232 (PC port) OR rs485
2 and 3 Wire, 24V Minute Impulse Sync
- * Optional: Multi-Zone synchronized system
- * Optional: Temperature Monitoring and Control:
Multi-Event Programmable Thermostat
Heating - Cooling Auto Change-Over
Inside and Outside Thermometer function
Min/Max Temperature Memory
Temperature Alarm and Relay outputs
- * Stand - Alone operation for Home or Office
- * Backup:
Selfrecharging backup - NO BATTERY NEEDED
10 Year Lithium battery option
- * Optional: Atomic Clock option
- * Optional: PC Sync Master option
- * Day/Date/Month/Year Alternating display selection
- * Fully Adjustable Brightness
Manual via remote control
Auto-dimming option
- * Julian Day option
- * Auto Leap-Year correction
- * Day Light Savings correction
- * Timers:
Optional: Multi-Event Programmable Timer
Wake-Up Alarm Timer with soft beeper control
Stop-Watch function up to 1/100 sec resolution
Optional: External Start/Stop/Reset switch inputs
Up/Down Presetable Timer and Counter with Alarm
(up to 99hrs:59min:59sec)
- * On-Board Alarms:
Alarm Buzzer, internal or optional external Horns
Optional: Alarm Relays (Form C, 10Amp/240V)
- * NON-GLARE lens
- * NON-MULTIPLEXING - Camera friendly

Surface Mount (or optional Flush Mount)
Splash-Proof Enclosure
Stainless Steel painted with baked enamel



Multifunction Remote Control Included



SPECIFICATIONS:

Supply Voltage: 115V, 208-240V, 50/60Hz
24 or 12V AC/DC
Power: 12VA average
Operating Temperature: 0C to +50C (32F to 122F)
Humidity: 95% RH max. non cond.
Dimensions (w/o back panel): 12" x 6.75" x 2.5"
(30.5cm x 17.15cm x 6.3cm)
Visibility: Easy up to 80 Ft. (25m)

6 DIGIT TIME DISPLAY modes:

MODE 1: *HH:MM SS (12 hour format with am/pm dot)
MODE 2: HH:MM SS (24 hour format)
MODE 3: HH:MM PM (12 hour format with am/pm text)
MODE 4: HH:MM SS (24 hour Military format)
MODE 5: HH:MM SS (UP/DOWN Timer modes)
MODE 6: MM:SS hh (UP/DOWN Timer modes with 1/100 sec)
MODE 7: d 267 07 (JULIAN DAY with Year)

DATE/TEXT DISPLAY modes:

MODE 1: FRI-OCT-12
MODE 2: OCT-12-FRI
MODE 3: 12-OCT-FRI
MODE 4: FRI-12-OCT
MODE 5: 12-OCT-2007
MODE 6: OCT-12-2007
MODE 7: 2007-12-OCT
MODE 8: HH-MM-SS (timer or counter)
MODE 9: TIMER MM-SS (timer)
MODE 10: DDD-HH-MM.SS (timer or counter)
MODE 11: IN 25.3 C (or: 77.5 F)
MODE 12: OUT 16.4 C (or: 61.5 F)
MODE 13: TEMP. 25.3 C (or: 77.5 F)
MODE 14: DAY 245 (Julian day of the year)
MODE 15: HH-MM-SS AM/PM (Real Time Clock)
MODE 16: TIME ZONE / TEXT DISPLAY

NOTE: Display with **UPPER** or **LOWER** seconds available

OPTIONS:

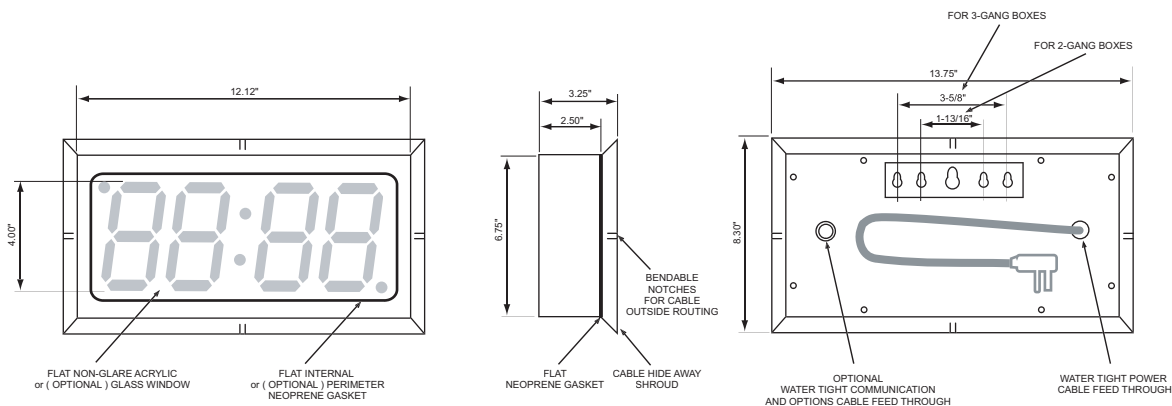
1. INTERNAL POWER SUPPLY FOR 115V or 220V , 50/60Hz
2. 12V and 24V DC or AC SUPPLY OPTION
3. SYSTEM MASTER SYNC WITH RS-232/485 COMPUTER INTERFACE / TWISTER PAIR
4. SYSTEM MASTER SYNC WITH SERIAL COMMUNICATION OVER POWER LINE
5. SYSTEM MASTER SYNC OVER POWER LINE CARRIER (HIGH AND LOW VOLTAGE)
6. SYSTEM MASTER SYNC 2 AND 3 WIRE, 24 VOLT MINUTE IMPULSE
7. SYSTEM MASTER SYNC ASCII TIME CODE FORMAT 0, 1, 2, 3, 4 ON RS-232/485



4-digit model

material: Stainless Steel

standard colors: Stainless Steel /Grey baked powder paint

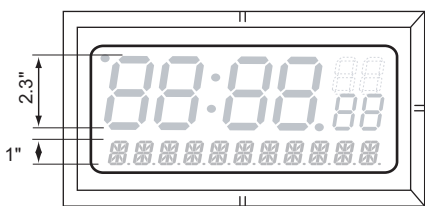


Short cord with flat plug shown

Optional:
Long cord or cord without plug



Lower or Upper seconds available



Lower or Upper seconds available

NOTE

This is a splash-proof enclosure and it should not be exposed to water under significant pressure.

