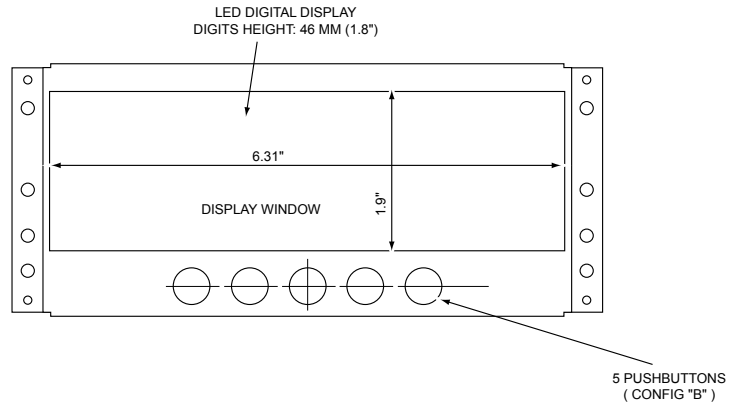
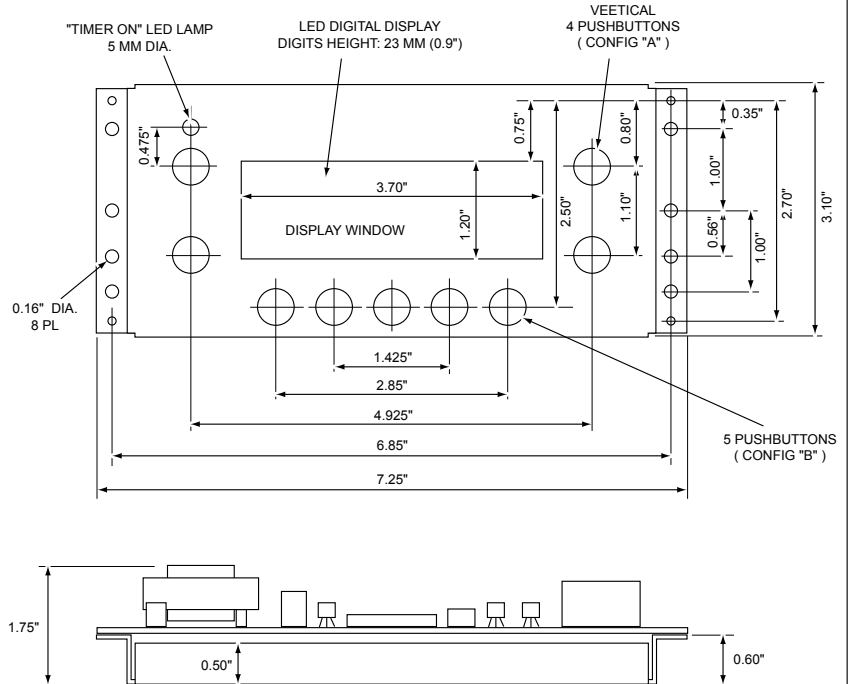




series: STL1



series: STS1



<p>VERTICAL 4 PUSHBUTTONS (CONFIG "A");</p> <ol style="list-style-type: none"> 1. TIMER ON/OFF 2. CLOCK 3. UP 4. DOWN <p>DISPLAY COLORS: RED, GREEN OR BLUE</p>	<p>HORIZONTAL 5 PUSHBUTTONS (CONFIG "B");</p> <ol style="list-style-type: none"> 1. TIMER ON/OFF 2. CLOCK 3. TEMPERATURE 4. UP 5. DOWN
---	---

MATERIAL: STEEL APPX. 1 MM THICKNESS
PAINT: BAKED POWDER, WHITE, GLOSS.

CLOCK/TIMER or THERMOSTAT functions.

Specifications:

Supply: <input type="checkbox"/>	120Vac, 208-240Vac or 12/24Vac/dc, 50/60Hz
Timer Preset range: <input type="checkbox"/>	0 to 99hrs:59min, UP or DOWN counting
Timer accuracy: <input type="checkbox"/>	Power line frequency or internal crystal 30 ppm
Temp. control range: <input type="checkbox"/>	depending upon thermistor probe used
Temp. units: <input type="checkbox"/>	Celsius or Fahrenheit (selectable)
Display: <input type="checkbox"/>	4 digits, 7 segment, Super bright LED
Clock format: <input type="checkbox"/>	12 or 24hrs (selectable)
Load output: <input type="checkbox"/>	SPST relay, 10 Amp, 250Vac (or custom)
Alarm buzzer: <input type="checkbox"/>	piezo, 85dB internal
Clock battery backup: <input type="checkbox"/>	optional

CLOCK-TIMER ASSEMBLY
model series: STS1 and STL1

TOL. = +/- 0.01"